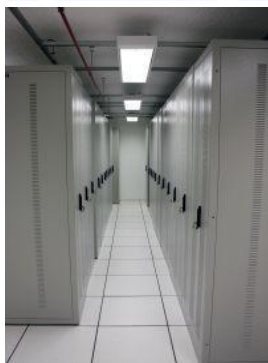




Open Source Intelligence (OSINT) training
for information and intelligence professionals.



Processing: Data Warehousing & Mining

Introduction

- The subjects of data warehousing and data mining are complex and can require specialist technical knowledge when digital systems are used. Often systems fail to deliver hoped for advantages because of a lack of common understanding of the requirements and capabilities between programmers and practitioners.
- Managers and practitioners must understand how to specify what they do and what they hope to achieve so that expected benefits are delivered in a timely and cost effective way.
- This course aims to provide an introduction to the subject so that managers and practitioners gain an understanding of the subject. This will enable systems to be specified effectively and provide maximum flexibility and continuing future benefits.

Course content

- Information flow.
- Technical definitions of the intelligence process.
- Defining information entities.
- Building in flexibility and scalability for the future.
- Deriving additional value from stored data.
- Legal aspects of data retention and use.



Target audience

- This course is aimed at all personnel within an organisation who are involved in the management, collection and processing of information into intelligence.

Conduct of training

- The training is conducted over two days and will involve lectures and some practical sessions.
- This training course can be tailored to specific requirements of organisations, especially where an organisation is actively involved in the management and maintenance of its own databases.

I N F O R M A T I O N 2 I N T E L L I G E N C E

2 Red House Square, Moulton Park, Northampton, Northamptonshire, NN3 6WL, United Kingdom
+44(0)20 8144 0953 | info@information2intelligence.eu | www.information2intelligence.eu